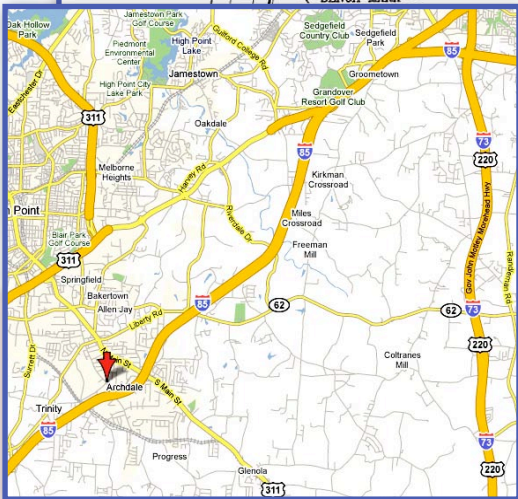
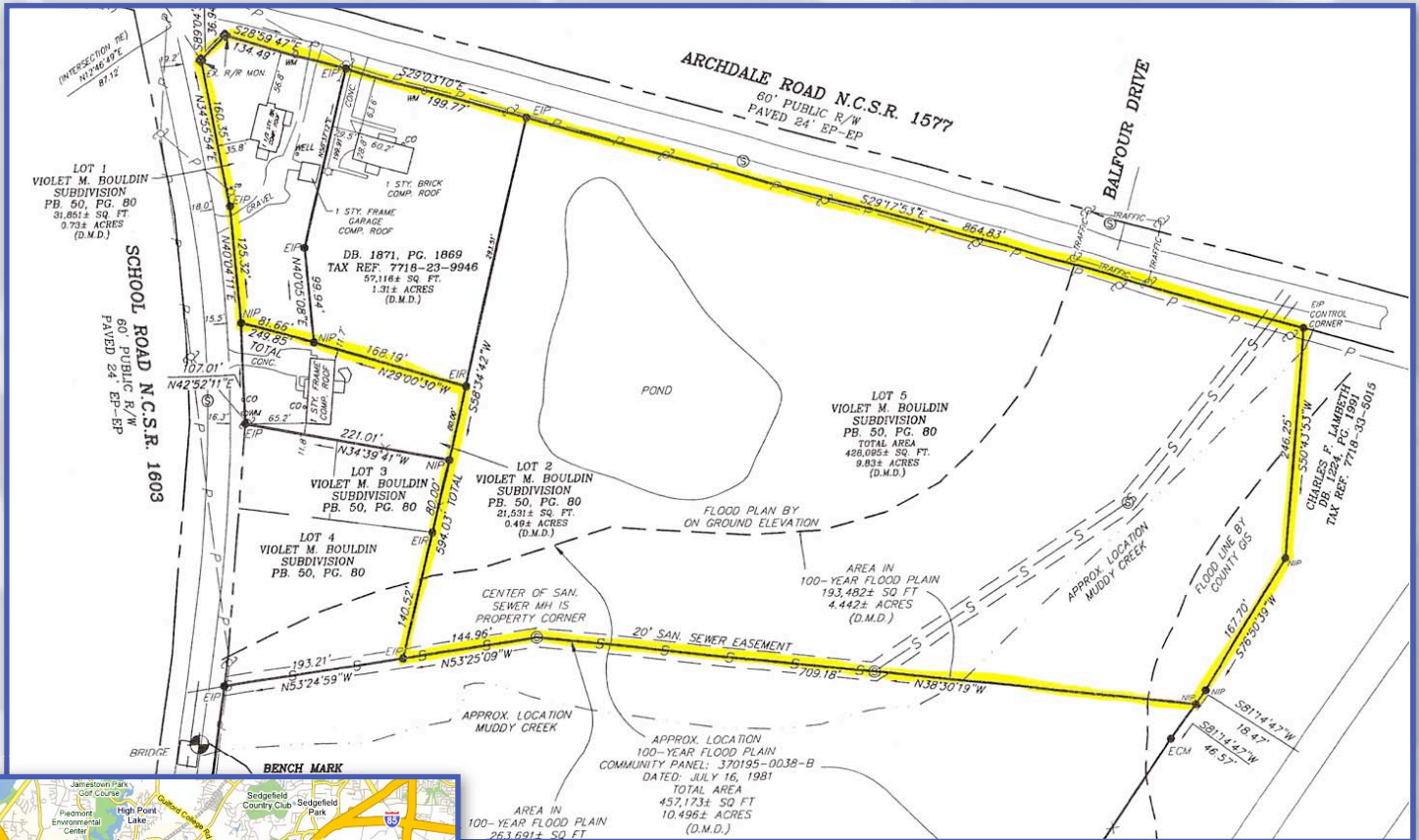


LAND for SALE

4400 Archdale Rd. • Archdale, NC 27263



11.87± Total Acres ~ 7.43± Usable
 (Balance of property in floodplain)
Zoned NB (Neighborhood Business)
 Great location for church, strip mall, etc.
\$795,000

For more information, please contact **Murray Skeen**, Broker, REALTOR®, ePRO
Murray@MurraySkeen.com



Murray Skeen Commercial & Industrial Properties, LLC
 2411 Penny Road, Suite 103 • High Point, NC 27265
 Office 336.454.5427 • Fax 336.454.5524 • Mobile 336.362.6550

No warranty or representation, express or implied, is made as to the accuracy of the information contained herein; all information submitted is subject to errors, omissions, change of price, change of financing, prior to lease or sale, withdrawal without notice, conditions affecting title and any other listing conditions. All information contained herein is subject to your independent verification. Murray Skeen Commercial & Industrial Properties, LLC, its agents, subsidiaries, affiliates, or assigns, assume no liability for any inaccuracy contained herein.